

POS.	DESCRIPCION / DESCRIPTION	A216WCB	CF8M
1	CUERPO / BODY	A216WCB	CF8M
2	TAJADERA / KNIFE	AISI-304	AISI-316
3	ASIENTO / GUIDE	RCH 1000	RCH 1000
4	PRENSAESTOPAS / PACKING GLAND	CF8M	CF8M
5	EMPAQUETADURA / PACKING	SYNT + PTFE	SYNT + PTFE
6	JUNTA / JOINT	EPDM	EPDM
7	SOPORTE / SUPPORT	S275JR	S275JR
8	ESPARRAGO / STUD	F-111 ZINC	AISI-316
9	ARANDELA / WASHER	ST ZINC	A-4
10	TUERCA AUTOBLOCANTE / SELF-LOCKING NUT	5.6 ZINC	A-4
11	TORNILLO / SCREW	5.6 ZINC	A-2
12	ARANDELA / WASHER	ST ZINC	A-2
13 *	CIERRE / SEAT	EPDM	EPDM
14 *	ANILLO / SOCKET	AISI-316	AISI-316

* → Estos elementos son opcionales
These elements are optional

OBSERVACIONES: Otros materiales bajo consulta.
NOTE: Other materials under request.

CONSTRUCCIONES METALICAS DE OBTURACION, S.L.
VÁLVULAS Y COMPUERTAS
VALVES & PENSTOCKS
Tel.: 902 40 80 50 / +34 943 67 33 99
Fax: 902 40 80 51 / +34 943 67 24 40
MADRID - BARCELONA - TOLOSA
E-mail: cmo@cmo.es Web: www.cmo.es



VALVULAS DE GUILLOTINA Serie-T-TAPPI PROGRAMA DE FABRICACION

KNIFE GATE VALVES T-TAPPI-Series FABRICATION RANGE



- UTILIZACIÓN:

Válvula de tajadera unidireccional para líquidos cargados con sólidos hasta una concentración máxima de un 6%.
Aplicación principal: tubería en línea, entre bridas.

- UTILIZATION:

Unidirectional knife gate valve for liquids products mixed with solids until 6%.
Main application: pipe in line, between flanges.



GESTION DE LA CALIDAD
CERTIFICADA

QUALITY
MANAGEMENT
CERTIFIED



ACTUADORES / ACTUATORS



HIDRAULICO
HYDRAULIC



MOTOR / MOTOR



REDUCTOR
SPUR GEAR

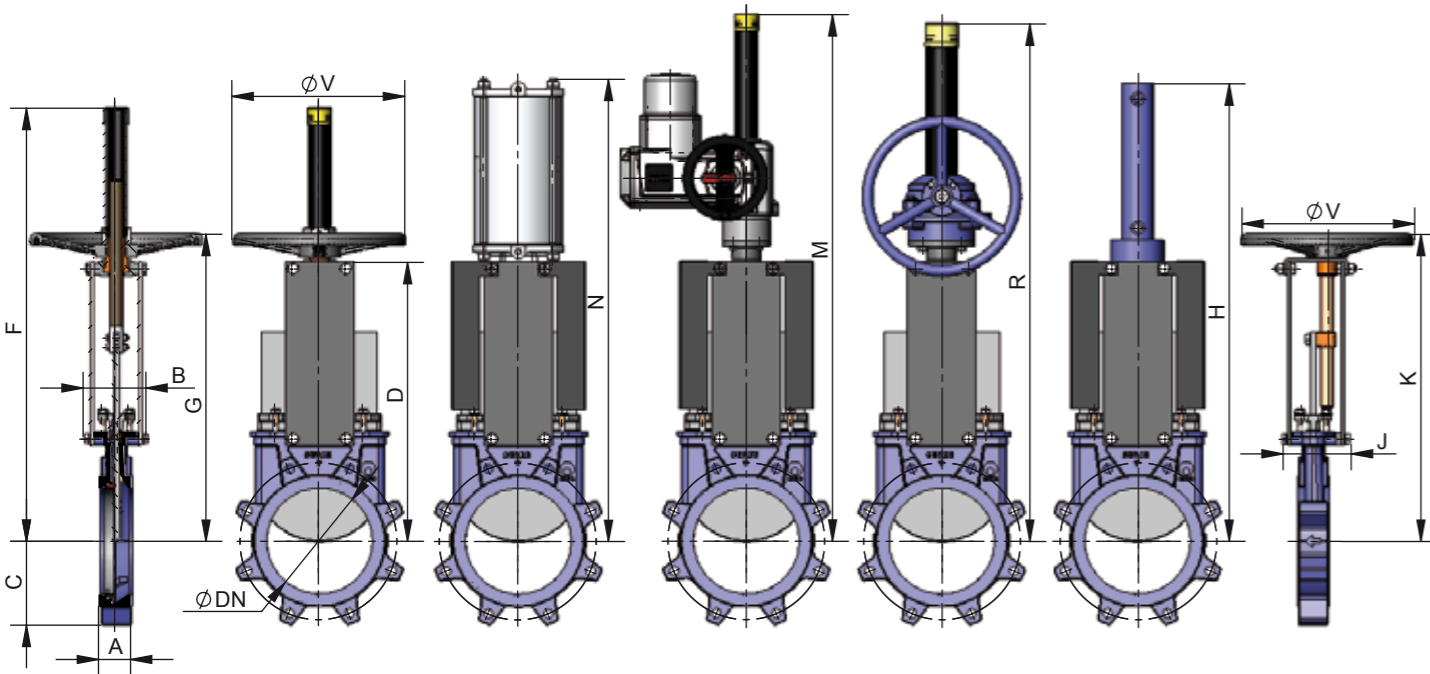
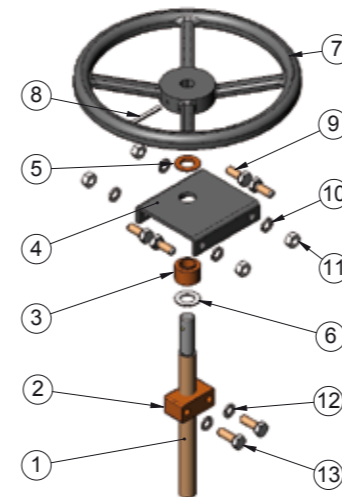
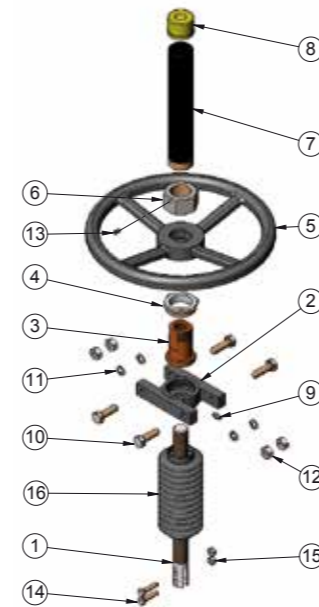
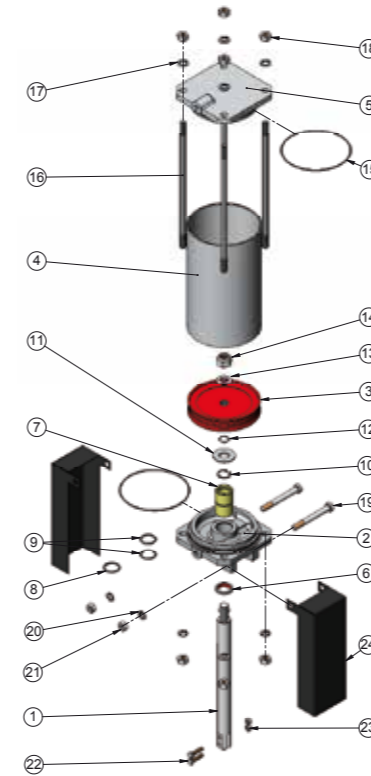


NEUMATICO / PNEUMATIC		
POS.	DESCRIPCION / DESCRIPTION	MATERIAL
1	VASTAGO / STEM	AISI-304
2	TAPA SOPORTE / CYLINDER HEAD	ALUMINIO / ALUMINIUM
2	Ø CAMISA / CYLINDER > Ø200 →	GJS-400
3	EMBOLO / PISTON	S275JR + EPDM
4	CAMISA / CYLINDER TUBE	ALUMINIO / ALUMINIUM
5	TAPA SUPERIOR / CYLINDER CAP	ALUMINIO / ALUMINIUM
5	Ø CAMISA / CYLINDER > Ø200 →	GJS-400
6	RASCADOR / SCRAPER	NITRILO / NITRILE
7	CASQUILLO / SOCKET	NYLON
8	ANILLO TORICO EXT. / OUTSIDE O-RING	NITRILO / NITRILE
9	ANILLO TORICO INT. / INSIDE O-RING	NITRILO / NITRILE
10	CIR-CLIP	ACERO / STEEL
11	ARANDELA / WASHER	ST ZINC
12	ANILLO TORICO / O-RING	NITRILO / NITRILE
13	ARANDELA / WASHER	ST ZINC
14	TUERCA AUTOBLOCANTE / SELF-LOCKING NUT	5.6 ZINC
15	ANILLO TORICO / O-RING	NITRILO / NITRILE
16	TIRANTES / TIE ROD	F-114 ZINC
17	ARANDELA / WASHER	ST ZINC
18	TUERCA / NUT	5.6 ZINC
19	TORNILLO / SCREW	5.6 ZINC
20	ARANDELA / WASHER	ST ZINC
21	TUERCA / NUT	5.6 ZINC
22	TORNILLO / SCREW	A-2
23	TUERCA AUTOBLOCANTE / SELF-LOCKING NUT	A-2
24	PROTECCION / PROTECTION	S275JR

VOLANTE / HANDWHEEL		
POS.	DESCRIPCION / DESCRIPTION	MATERIAL
1	HUSILLO / SPINDLE	AISI-303
2	PUENTE / YOKE	GJL-250
3	TUERCA HUSILLO / SPINDLE NUT	BRONCE / BRONZE
4	TUERCA TOPE / BUTT NUT	F-111
5	VOLANTE / HANDWHEEL	GJS-450
6	TUERCA CAPERUZA / HOOD NUT	5.6 ZINC
7	CAPERUZA / HOOD	ST-37
8	TAPON PROTECCION / PLUG PROTECTION	HD-500
9	ENGRASADOR / GREASER	ACERO / STEEL
10	TORNILLO / SCREW	5.6 ZINC
11	ARANDELA / WASHER	ST ZINC
12	TUERCA / NUT	5.6 ZINC
13	PRISIONERO / SETSCREW	ACERO / STEEL
14	TORNILLO / SCREW	A-2
15	TUERCA AUTOBLOCANTE / SELF-LOCKING NUT	A-2
16*	FUELLE PROTECTOR / PROTECTOR BELLOW	CAUCHO ANTIABRASIVO / ANTIABRASIVE RUBBER

* → Estos elementos son opcionales. / These elements are optional.

VOLANTE HUSILLO NO ASCENDENTE / NO-RISING STEM HANDWHEEL		
POS.	DESCRIPCION / DESCRIPTION	MATERIAL
1	HUSILLO / SPINDLE	AISI-303
2	TUERCA HUSILLO / SPINDLE NUT	BRONCE / BRONZE
3	CASQUILLO / SOCKET	BRONCE / BRONZE
4	PUENTE / YOKE	S275JR
5	CASQUILLO / SOCKET	BRONCE / BRONZE
6	ARANDELA / WASHER	ST ZINC
7	VOLANTE / HANDWHEEL	GJS-450
8	PASADOR / PIN	ACERO / STEEL
9	TORNILLO / SCREW	5.6 ZINC
10	ARANDELA / WASHER	ST ZINC
11	TUERCA / NUT	5.6 ZINC
12	ARANDELA / WASHER	A-2
13	TORNILLO / SCREW	A-2



DIMENSIONES / DIMENSIONS

DN	ND	A	A	B	C	D	F	G	ØV	N	M	R	H	J	K
50	2"	47,6	1 7/8"	91	61	241	410	280	225	416	581	540	457	101	277
65	2 1/2"	47,6	1 7/8"	91	68	268	437	308	225	456	607	566	500	101	304
80	3"	50,8	2"	91	91	294	463	333	225	498	632	592	560	101	330
100	4"	50,8	2"	91	104	334	503	373	225	562	672	632	620	101	370
125	5"	57,2	2 1/4"	101	118	367	586	407	225	636	705	665	683	111	402
150	6"	57,2	2 1/4"	101	130	419	638	458	225	723	757	717	755	111	454
200	8"	69,9	2 3/4"	118	159	525	816	578	325	886	988	942	926	128	578
250	10"	69,9	2 3/4"	118	196	626	1017	679	325	1133	1089	1043	1077	128	679
300	12"	76,2	3"	118	231	726	1117	779	380	1278	1189	1193	1245	128	779
350	14"	76,2	3"	290	257	797	1337	906	450	1383	1302	1335	1376	305	860
400	16"	88,9	3 1/2"	290	290	903	1443	1012	450	1532	1458	1441	1532	305	981
450	18"	88,9	3 1/2"	290	312	989	1629	1098	450	1704	1754	1677	1707	305	1067
500	20"	114,3	4 1/2"	290	340	1101	1741	1210	450	1867	1866	1789	1869	305	1179
600	24"	114,3	4 1/2"	290	398	1307	2047	1416	450	2173	2073	2045	2176	305	1386
700	28"	114,3	4 1/2"	320	453	1506	---	---	---	2520	2391	2401	2525	---	---
750	30"	117,5	4 5/8"	320	489	1620	---	---	---	2685	2555	2565	2689	---	---
800	32"	117,5	4 5/8"	320	503	1720	---	---	---	2835	2705	2715	2839	---	---

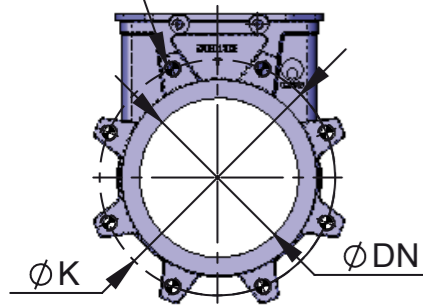
OBSERVACIONES: Tamaños mayores bajo consulta. / NOTE: Bigger sizes under request.

Cotas y dibujos sin compromiso. CMO S.L. se reserva, en cualquier momento, el derecho de modificarlos a discreción y sin previo aviso.

Dimensions and drawings without obligation. CMO S.L. reserves, at any moment, the right of their modification at its own discretion and without any previous notice.

● → Taladro roscado ciego / Blind tapped hole ○ → Taladro roscado pasante / Through tapped hole

Profundidad de rosca P
Screw depth P



DN	ND	ΔP		TALADRADO DE BRIDAS / BORING JOINT									
		Kg / Cm²	psi	PN-10					ASA-150				
				●	○	M Métrico	P	ØK	●	○	R UNC	P	ØK
50	2"	10	150	2	2	M 16	8	125	2	2	5/8"	8	120,6
65	2 1/2"	10	150	2	2	M 16	8	145	---	---	---	---	---
80	3"	10	150	2	6	M 16	9	160	2	2	5/8"	9	152,4
100	4"	10	150	2	6	M 16	9	180	2	6	5/8"	9	190,5
125	5"	10	150	2	6	M 16	9	210	2	6	3/4"	9	215,9
150	6"	10	150	2	6	M 20	10	240	2	6	3/4"	10	241,3
200	8"	10	150	2	6	M 20	10	295	2	6	3/4"	10	298,4
250	10"	10	150	4	8	M 20	12	350	4	8	7/8"	12	361,9
300	12"	10	150	4	8	M 20	12	400	4	8	7/8"	12	431,8
350	14"	10	150	6	10	M 20	14	460	4	8	1"	14	476,2
400	16"	10	150	6	10	M 24	21	515	6	10	1"	21	539,7
450	18"	10	150	8	12	M 24	22	565	6	10	1 1/8"	22	577,8
500	20"	10	150	8	12	M 24	22	620	8	12	1 1/8"	22	635
600	24"	10	150	8	12	M 27	22	725	8	12	1 1/4"	22	749,3
700	28"	8	125	10	14	M 27	22	840	---	---	---	---	---
750	30"	8	125	---	---	---	---	---	12	16	1 1/4"	22	914,4
800	32"	8	125	10	14	M 30	22	950	---	---	---	---	---

OBSERVACIONES: Tamaños mayores bajo consulta. / NOTE: Bigger sizes under request.

